

New Era[™]
**building
systems**

NEW
CENTURY





Get to know us

Heritage

Founded in 1992, New Era Building Systems quickly became a leader known for quality and innovation in the systems-built industry. While trends come and go, the New Era mission continues to stand on the ideals on which we were founded - by building the best quality product at the best price, giving our customers unsurpassed value. Known for our flexibility in design and option availability, we offer you the ability to create the perfect home for you and your family. Our employees take pride in the quality homes we produce and share a commitment to providing every customer the home they have always dreamed of. Over 12,000 homebuyers have trusted us to build their new home and we look forward to the opportunity to build yours.

Innovation

New Era takes pride in its ability to design and engineer solutions for the most challenging home and building designs. Our team strives to say "yes we can" and we work together to overcome the obstacles many builders don't want to deal with. From single-section homes with 12/12 roofs and lofts to patented truss floor systems, we have always sought out innovative methods to build the custom structures our customers desire. New Era was chosen for pilot programs by MHI, PATH and NextGen. Companies such as Dunkin' Donuts, Microtel and Subway have trusted the innovative nature of New Era to accomplish their buildings.

Customization

New Era was founded on the ideal of building what no one else would. That tradition continues today with flexibility not only in floor plans but in amenities, trends and any architectural style to achieve your dream home.

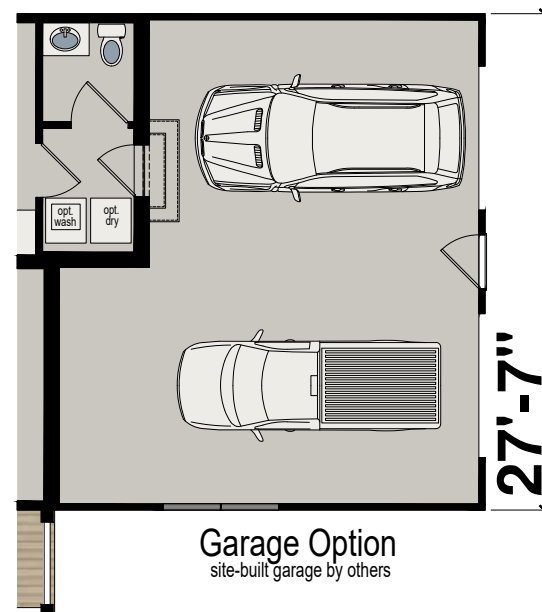
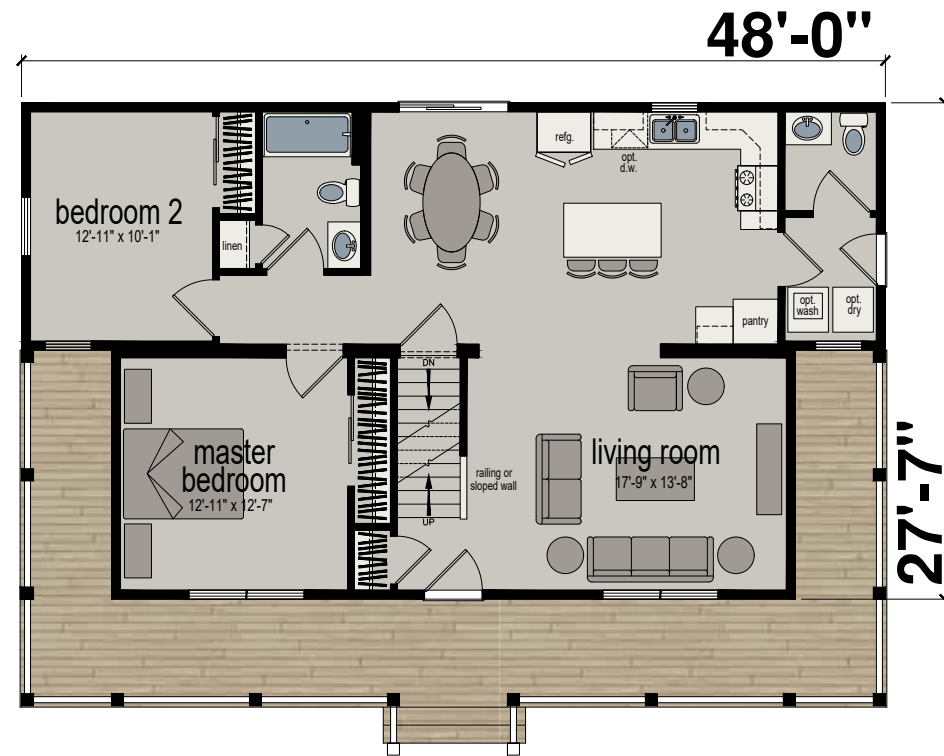
Flexibility

From small additions to luxury homes or light commercial to hospitality, New Era has been chosen for projects from Maine to Mississippi to Wisconsin. Single-story to four-story, our flexibility has allowed us to accomplish projects from the shores of the Outer Banks to the inner city of Milwaukee.

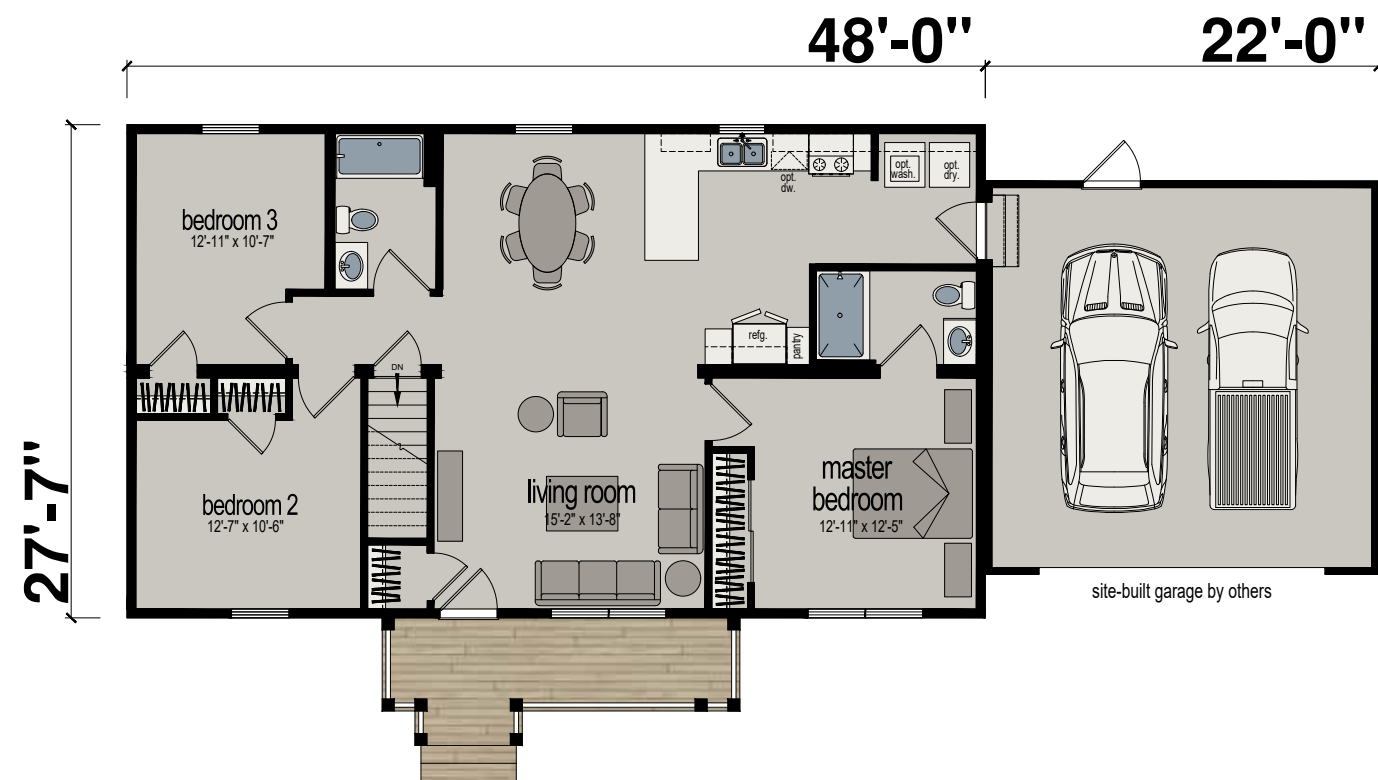
Award Winning

Winners of the HGTV Best New Home Design of the Year, NAHB BSC Jerry Rouleau Award of Excellence and multiple MHI awards over the years, New Era has been at the forefront of consumer driven design trends.

Montana | 2 Bed-2 Bath
1186 SQ. FT.



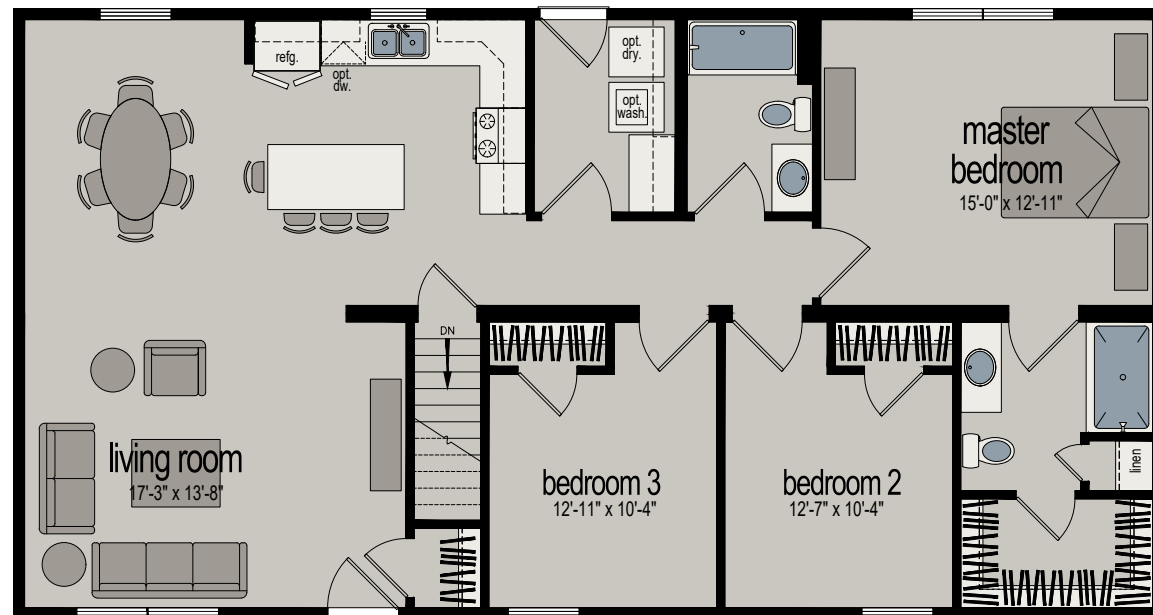
Lawton | 3 Bed-2 Bath
1324 SQ. FT.



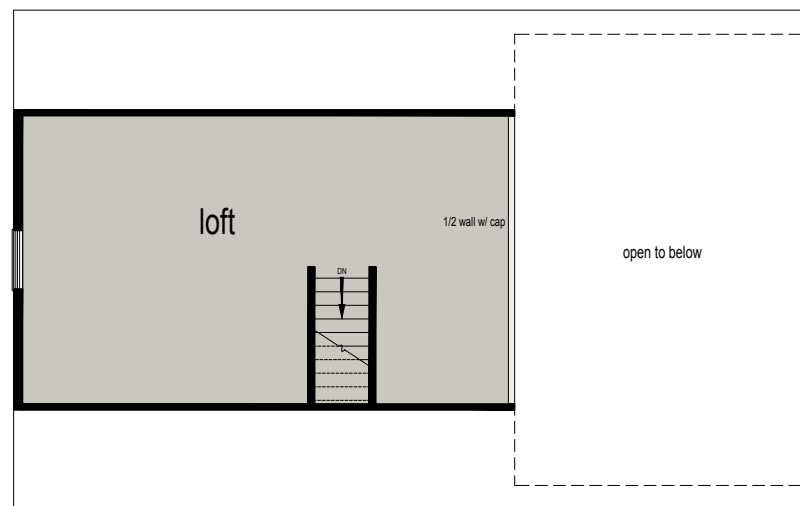
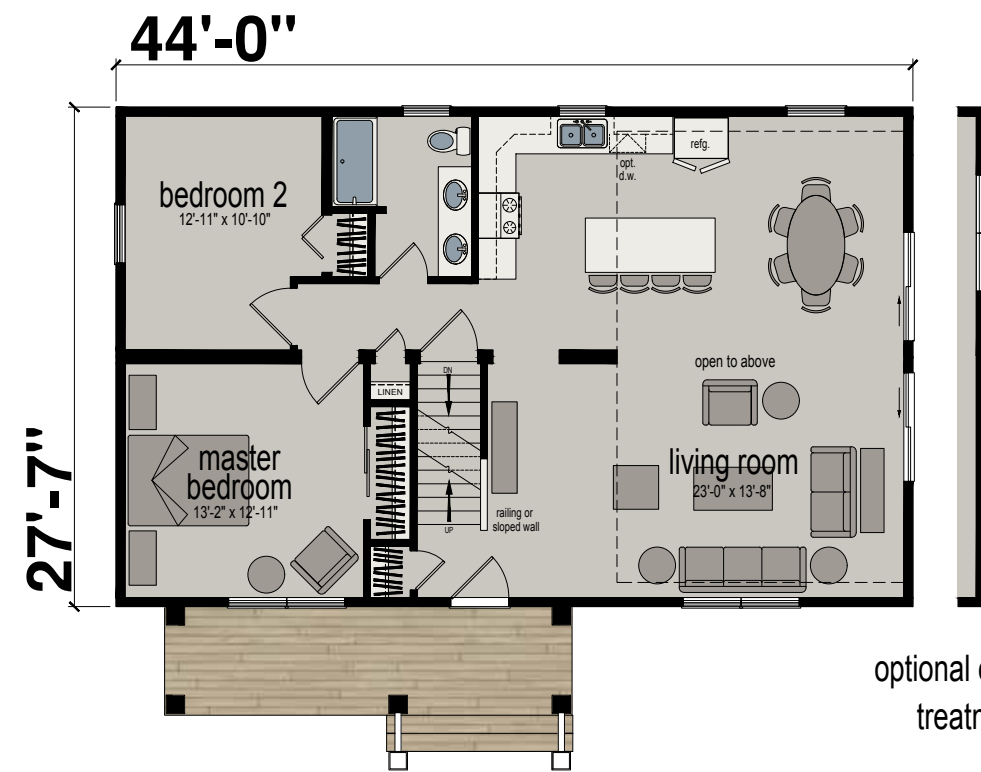
McAlester | 3 Bed-2 Bath
1434 SQ. FT.

52'-0"

27'-7"



Laurelwood | 2 Bed-1 Bath
1651 SQ. FT.





Optional Exterior
Shown with site-built porch and garage by others

Loyola | 3 Bed-2 Bath
1765 SQ. FT.

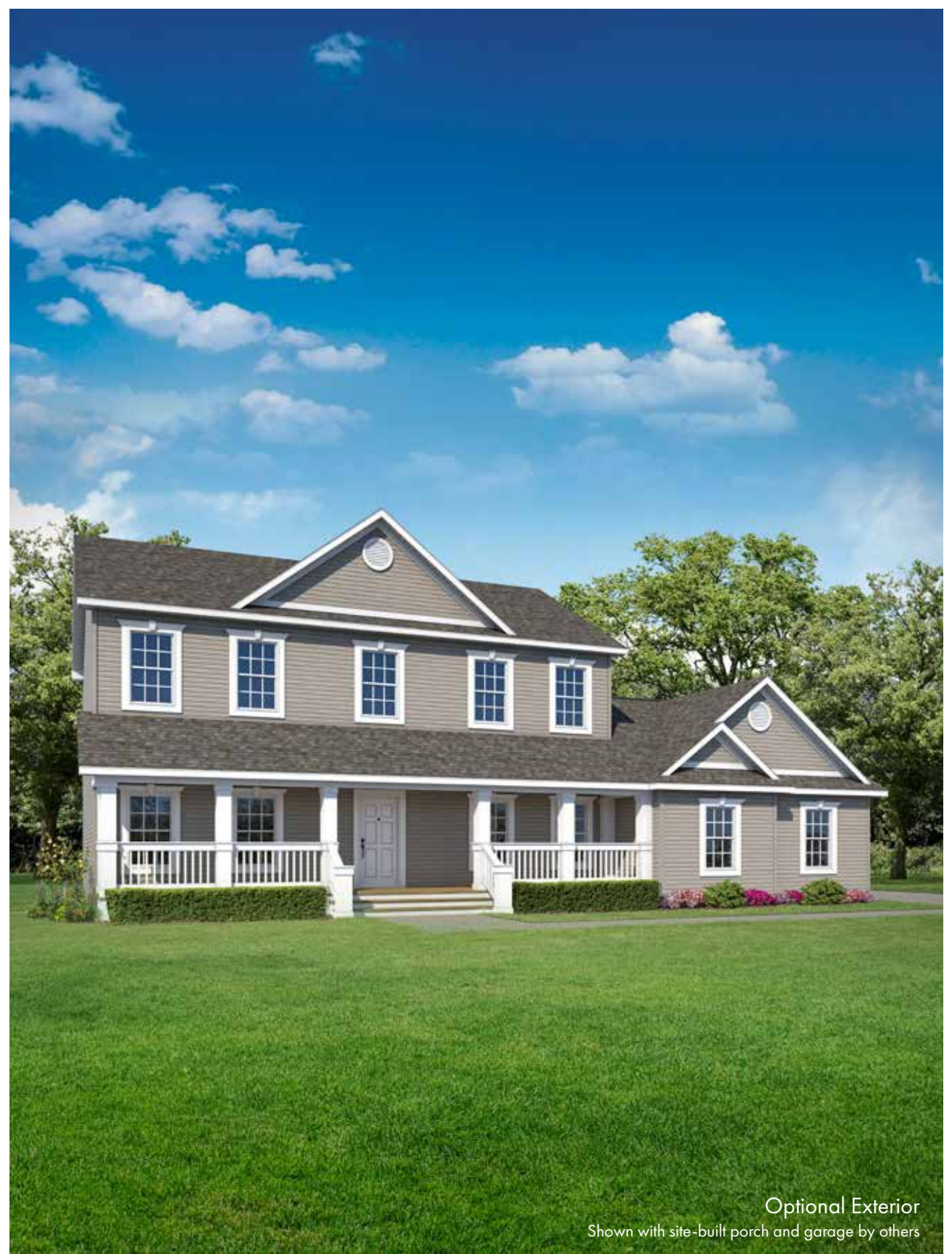
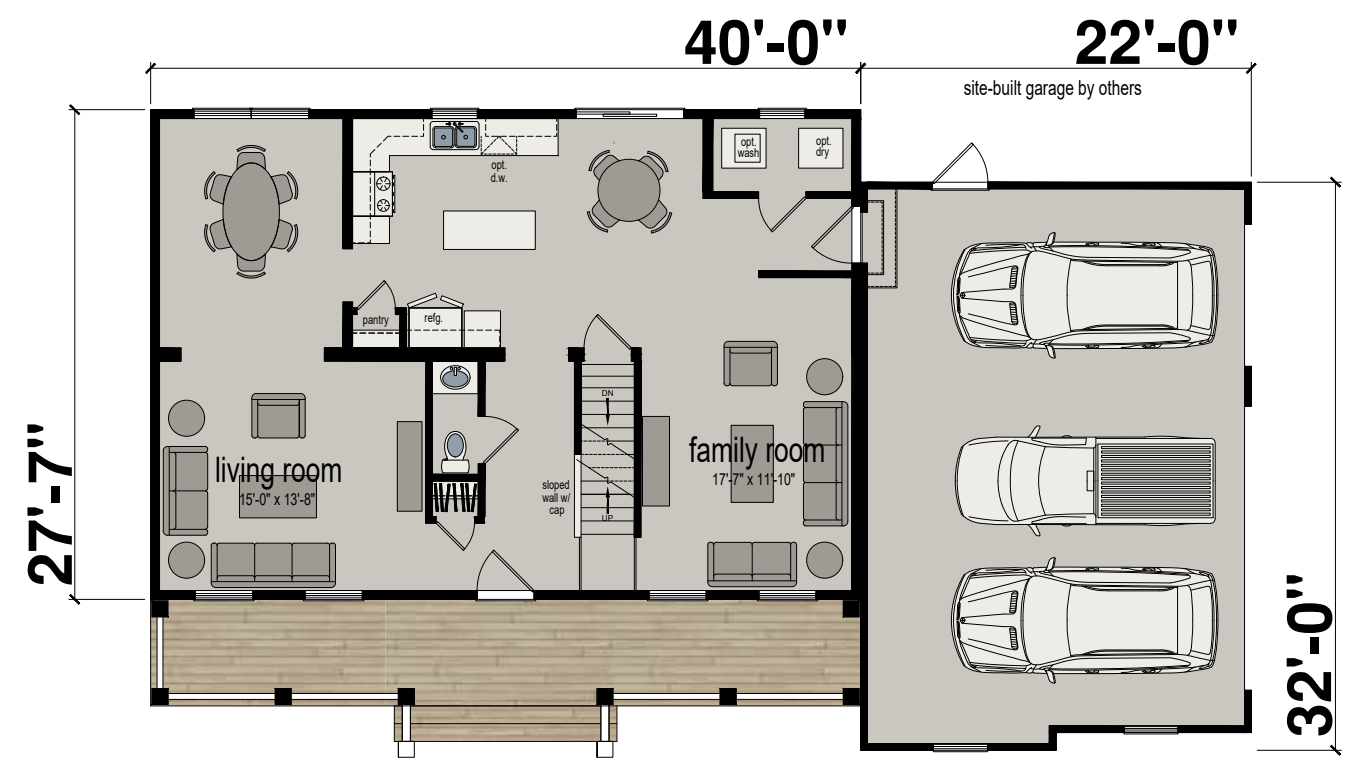
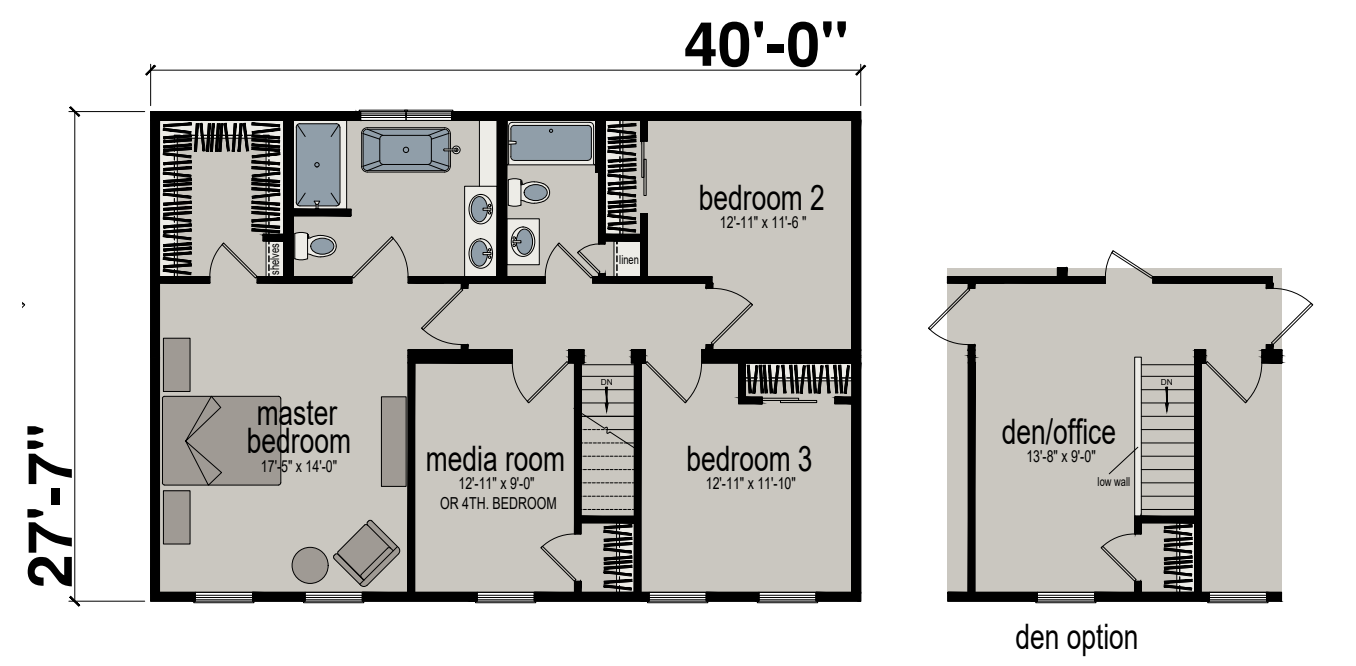


Optional Exterior
Shown with site-built porch and garage by others

Beckley | 3 Bed-2 Bath
1876 SQ. FT.



Weatherford | 3 Bed-2.5 Bath
2182 SQ. FT.



Optional Exterior
Shown with site-built porch and garage by others



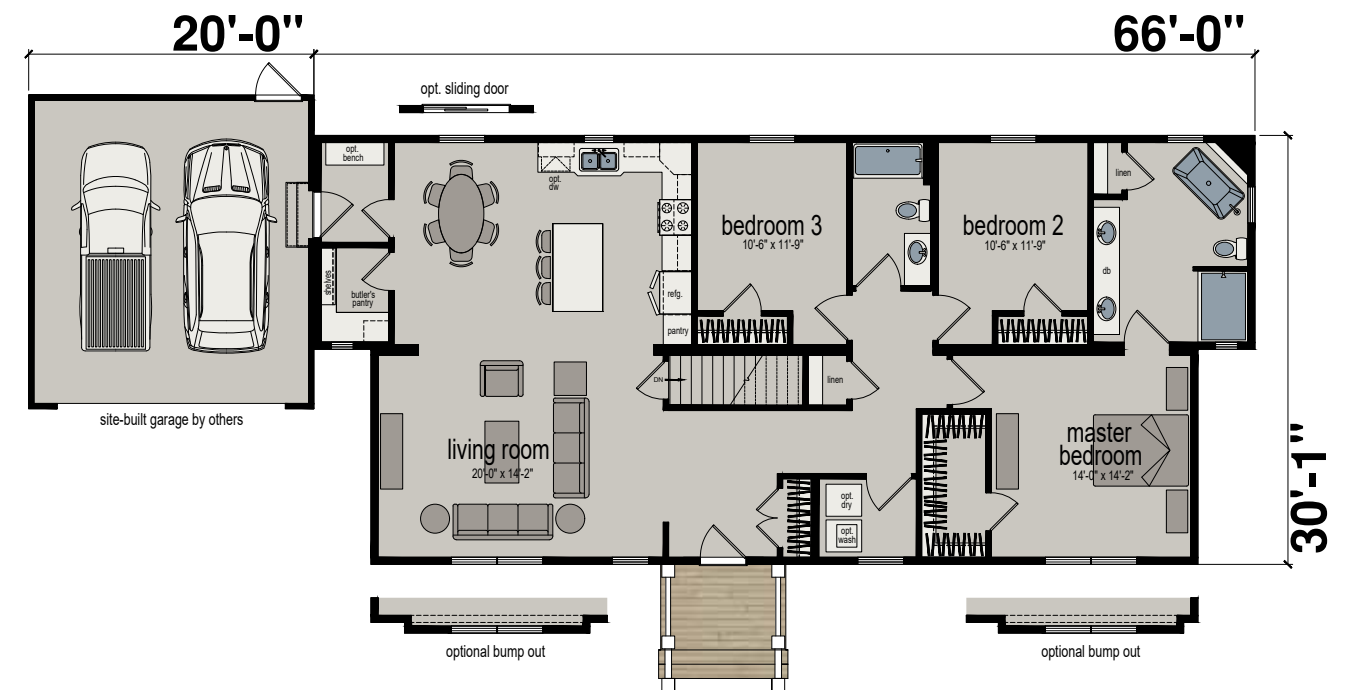
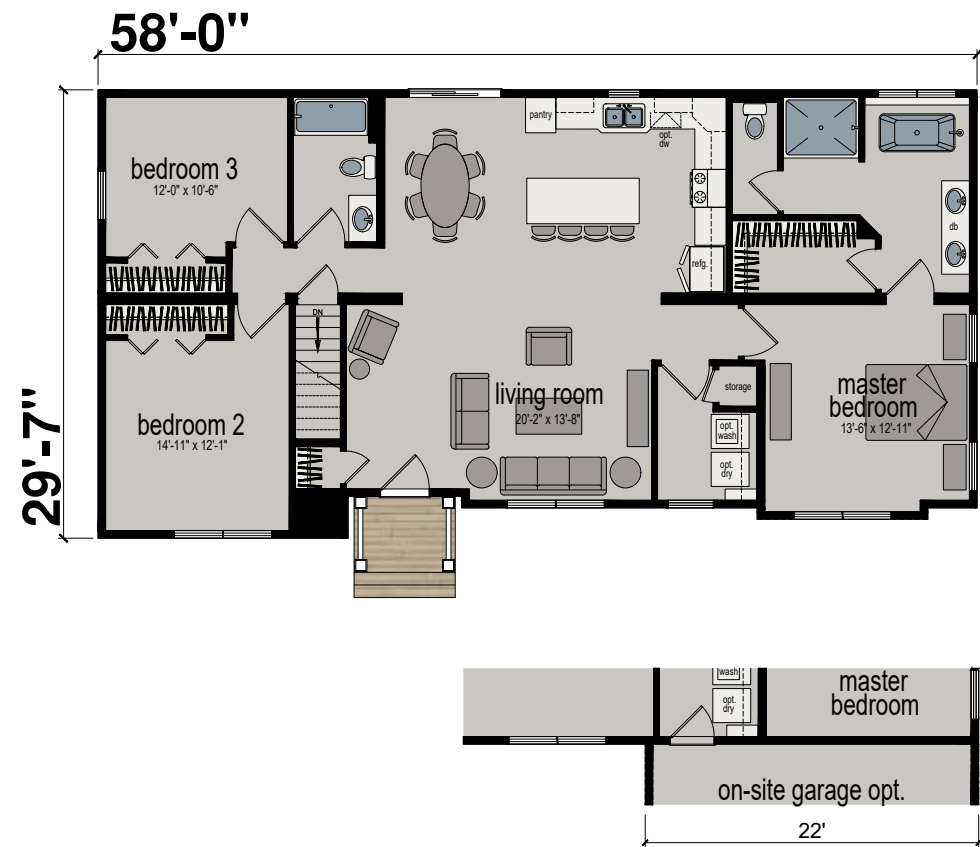
Optional Exterior
Shown with site-built porch and garage by others



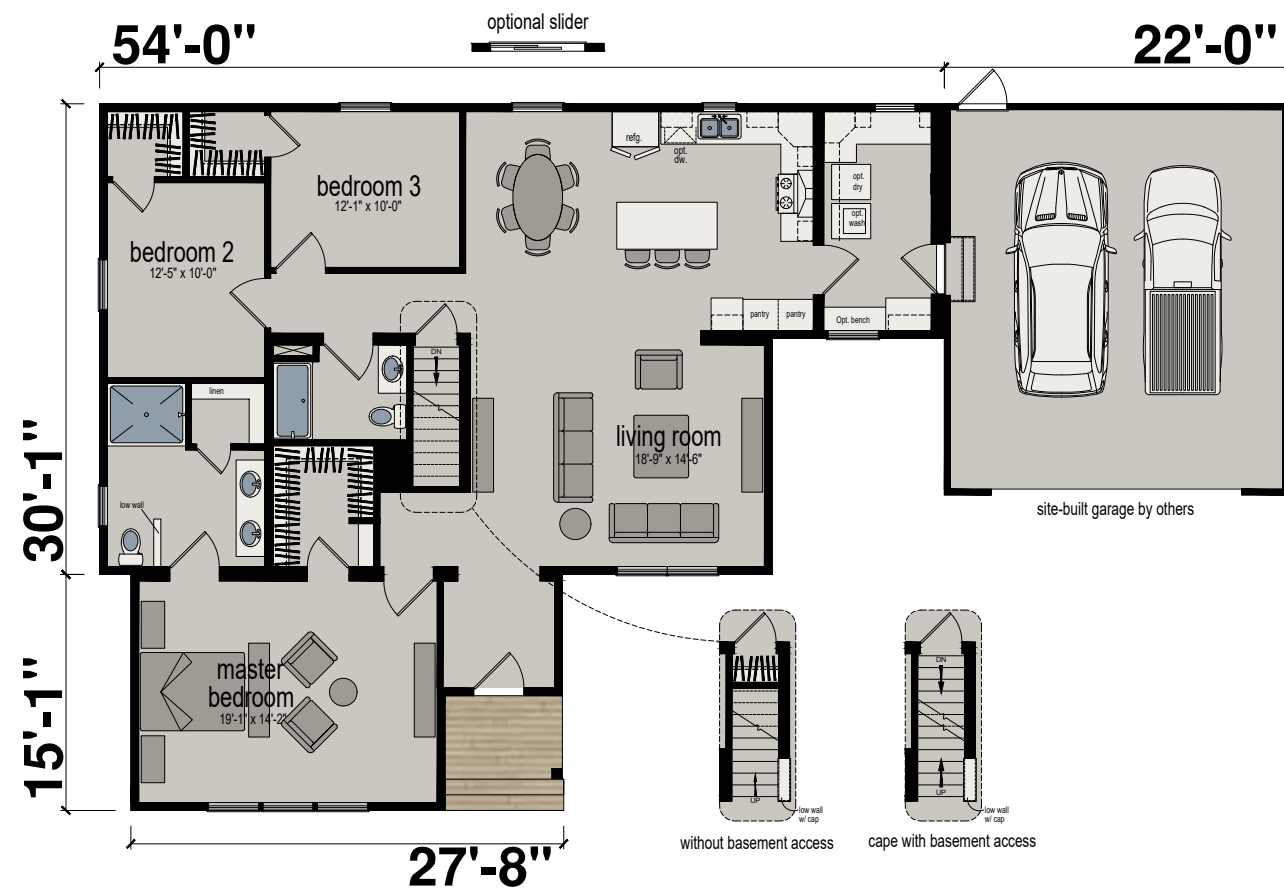
Optional Exterior
Shown with site-built porch and garage by others

Winsford | 3 Bed-2 Bath
1636 SQ. FT.

Chataqua | 3 Bed-2 Bath
1865 SQ. FT.



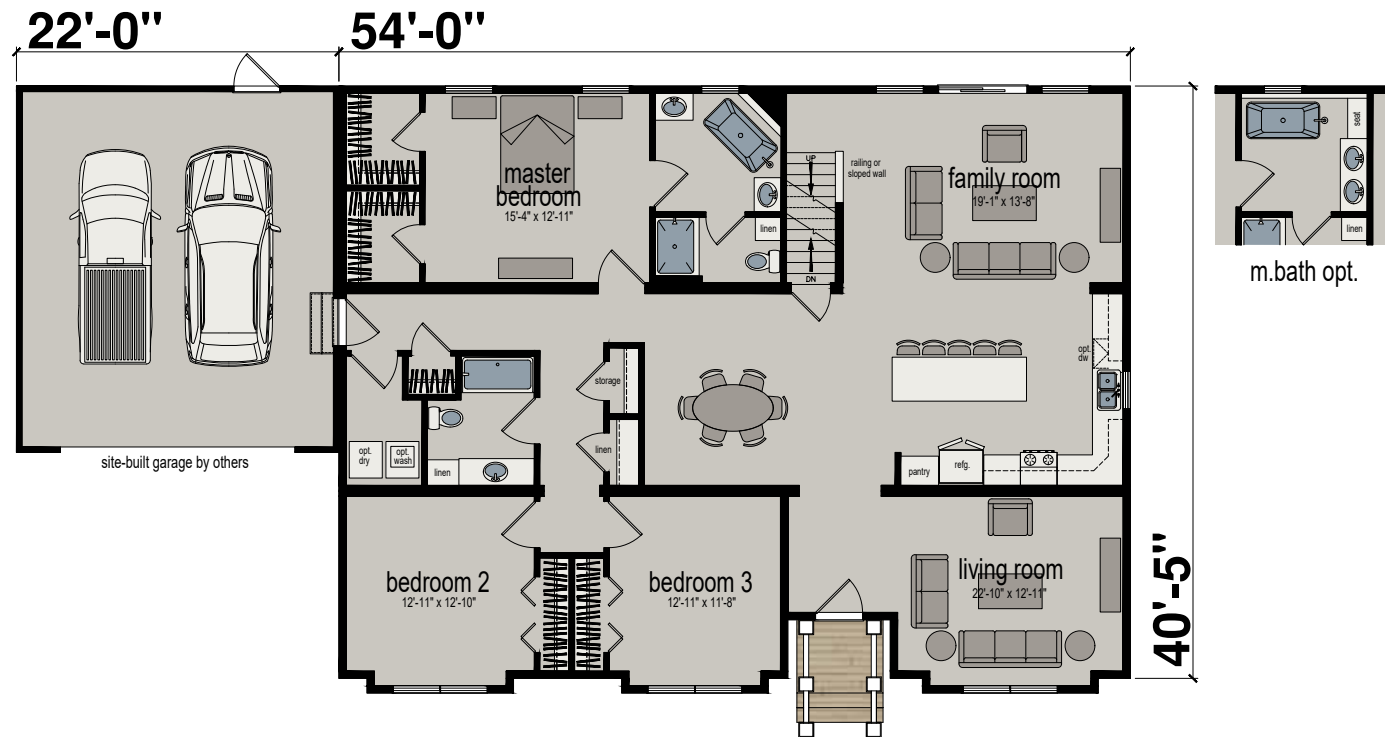
Amherst | 3 Bed-2 Bath
1820 SQ. FT.





Optional Exterior
Shown with site-built porch and garage by others

Holbrook | 3 Bed-2 Bath
2187 SQ. FT.



NewEra™
building
systems

Construction

- 16" O.C. Dimensional Lumber Floor Framing
- 16" O.C. Exterior Wall Framing
- OSB Roof, Wall and Floor Decking
- Pre-Engineered 45 lb. GSL Rated Roof Systems
- House Wrap with Tape Flashing System
- R-21 Exterior Wall Insulation
- R-38 Roof Insulation

Exterior

- Therma-Tru® Fiberglass Exterior Doors
- Silverline® Energy Star® DP50 Rated Windows
- TrueWall™ Vinyl Siding
- Architectural Shingles
- Shutters on Front

Cabinetry

- Solid Oak Frame Cabinetry
- Oak Door and Drawer Fronts with Veneer Panels
- Dovetail Constructed Drawer Boxes
- Drawer Over Door Cabinet Design
- Concealed Hinges
- Soft-Close Drawer Glides
- Roll Out Trays in Base Cabinets
- Adjustable Wall Cabinet Shelving
- Solid Oak Crown Molding
- Under Cabinet Trim at Wall Cabinets

Due to continuous product development and improvement, prices, specifications, and materials are subject to change without notice or obligation. Square footage and other dimensions are approximate. Exterior images may be artist renderings and are not intended to be an accurate representation of the home. Renderings, photos and floor plans may be shown with optional features or third-party additions.



*New Era*TM
**building
systems**

451 Southern Ave
Strattanville, PA 16258
www.neweramodulars.com